


Glass Bottle with Water Distiller User Manual

CAUTION

- 1. ADULT SUPERVISION IS REQUIRED to open and/or assemble the glass bottle kit. Keep glass bottle out of reach of children.
- 2. Take caution when opening package. If the glass is damaged, carefully collect all pieces in a rigid box or container. Seal and mark the box "Broken Glass for Disposal" to prevent personal injury. Broken glass should NOT be placed in an opaque plastic bag.
- 3. Place the glass bottle on a flat, levelled surface to prevent it from sliding and falling.
- 4. Follow this assembly instruction EXACTLY to ensure user safety. An improperly assembled glass bottle may cause damage to the bottle or result in personal injury.
- 5. Inspect the glass bottle regularly. Do not use the glass bottle if it is chipped, cracked or damaged. Tighten the handle screws if it feels loose (see "Assembly Instruction" that comes with the Glass Bottle).
- 6. Take caution using glass bottle. If the glass is broken, carefully collect all pieces in a rigid box or container. Seal and mark the box "Broken Glass for Disposal" to prevent personal injury. Broken glass should NOT be placed in an opaque plastic bag.

Activated charcoal Nozzle User Manual :


1



Please check the glass insert for damage before installation of activated charcoal.


Install Activated Charcoal: Fold 1 or 2 packs of activated charcoal in half. Place it in the Activated charcoal nozzle that comes with the Glass Bottle Kit. (See Assembly Instruction, Part D: Activated Charcoal Nozzle).

2




Find the two clip-on slots underneath water distiller lid. Align nozzle tabs to the slots and push upwards to snap it in place.

3




Do not use the glass bottle if it is chipped, cracked or damaged. Inspect the glass bottle regularly.

4



Replace activated charcoal packs every 25 days. Gently squeeze both sides of the nozzle and pull it down and towards you to remove.

5



When glass bottle is filled with water, it can weight as much as 5kg. Use both hands and extreme care when lifting the glass bottle. Place one hand on the handle and the other at the bottom to support the bottle.

Note Regarding 4 Liter Glass Bottle Warranty

Quality Instruction

You may notice the following on the surface of the 4 liter glass bottle:

- 1. Bubbles
- 2. Flow marks
- 3. Small spots (white/black)
- 4. White/Red polish scratches
- 5. Partial crystallization of glass particles

Should you notice any of the items listed above, please note that these are natural results of the manual manufacturing process and are not indications of a defective product. These bottles are made of heat resistant materials and were tested in order to ensure that they are safe for use by you.

Glass Bottle:

The four-liter glass bottle is hand-made by skilled craftsmen. Some bubbles or visible imperfections are inherent to this process.

Note : If the glass bottle is cracked or broken, do not use.

Please contact your distributor immediately for further instructions.

Thank you for your purchase.

You are sure to enjoy good quality and good health!

Glass Bottle with Water Distiller User Manual



## CAUTION

1. ADULT SUPERVISION IS REQUIRED to open and/or assemble the glass bottle kit.
2. Take caution when opening package. If the glass is damaged, carefully collect all pieces in a rigid box or container. Seal and mark the box "Broken Glass for Disposal" to prevent personal injury. Broken glass should NOT be placed in an opaque plastic bag.
3. Follow this assembly instruction EXACTLY to ensure user safety. An improperly assembled glass bottle may cause damage to the bottle or result in personal injury.
4. Place a towel on the table surface underneath the glass bottle to prevent sliding or damaging during assembly.

Not Dish Washer Safe.

### A Tool Required



1 x 6mm Phillips-head screwdriver  
(not included)

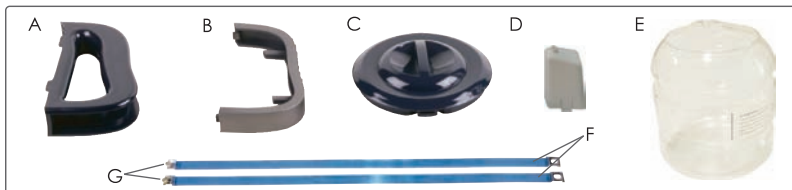
### B Assembly Instruction

- 1 Open the water distiller lid. Remove the Carton package inside and take the glass bottle out .



- 2 Open the Carton package. Check that all parts are included in the kit as shown below Figure.  
A. Handle / B. Handle Cover / C. Lid  
D. Activated Charcoal Nozzle (for use with Water Distiller, not part of glass bottle)  
E. Glass Bottle / F. 2x Stainless Steel Straps  
G. 2x Screws (installed on "part F: SS Straps")

※ Carefully inspect the glass bottle. DO NOT ASSEMBLE IF IT'S CRACKED, CHIPPED OR DAMAGED. Contact your distributor for replacements.

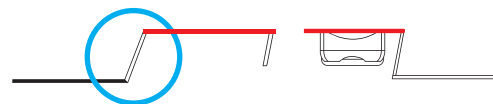


Please Note : Because the glass bottle is handmade slight irregularities are possible. Occasionally this will require an adjustment to the stainless steel straps to fit properly. If while following step 4 you find your straps too loose or too tight, you will need to adjust the straps according to the directions below. For further assistance contact your distributor.

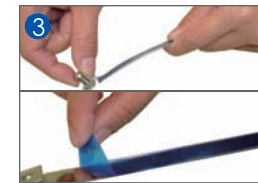
Use 1 × needle nose pliers to adjust the angle.



If the strap is too tight, use the needle nose pliers to adjust the its angle (toward the outside). See as below :



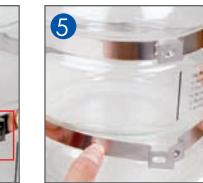
If the strap is too loose, use needle nose pliers to adjust its angle (toward the inside). See as below :



Remove the screws and peel off the blue protective film on "Part F" Stainless Steel Straps.



Work on a surface lined with a soft cloth or towel. There are two ribs on the glass bottle body. Wrap one strap around the bottle, placing it in the rib. Position the strap so that its cap nut is facing towards the glass bottle. Snap the other end with screw slot over the cap nut.



Do the same for the other strap. The cap nut orientation must be the same for both straps.



Insert the lower screw next and tighten just a little. Move the handle to the right a little so that the black reference line is just covered evenly by the handle edge. While making sure the handle is vertically aligned with the black reference line, tighten both screws.



Place the glass bottle right side up. Viewed from inside, check the handle is aligned to the black reference line.



When done correctly, the handle will be also aligned with the spout on the opposite end. If necessary, loosen the screws and re-adjust.



Align right-hand side of the screw holes to the black reference line on the label.



"Part A: Handle" fits over the two screws holes. Align the handle with the screw holes and the black reference line to the right.



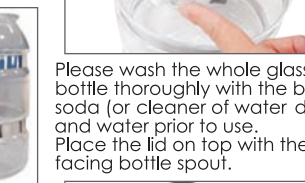
Insert the upper screw first. Using a 6mm Phillips-head screwdriver, turn the screw only a few threads so that it holds. Do not fully tighten.



Lift the glass bottle by the handle just a few inches above table surface. GENTLY shake the bottle to make sure the handle is securely assembled. Tighten the screws more if the handle feels loose.



Clip "Part B: Handle Cover" onto the handle. Push it all the way in.



Please wash the whole glass water bottle thoroughly with the baking soda (or cleaner of water distiller) and water prior to use. Place the lid on top with the notch facing bottle spout.



The glass bottle is now ready for use.